

Globe Valves - Bolted Bonnet

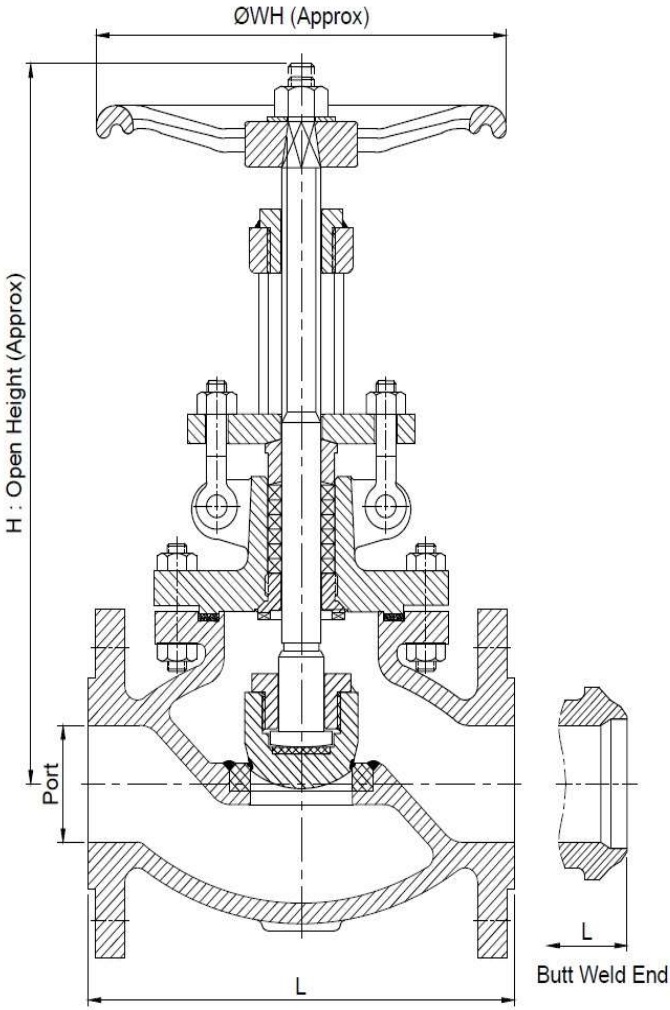


NPS 2" - 24" (DN50 - DN600), ASME Classes 150# - 2500#

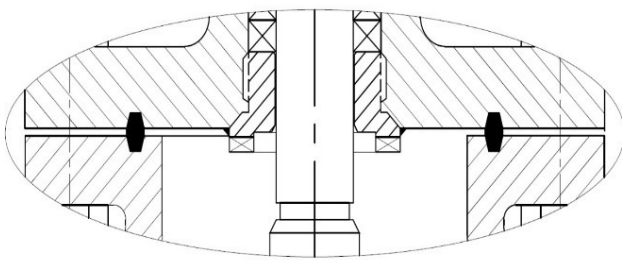
Design Specification

Item	Applicable Specification
Design	: API 623 / BS EN 1873
Wall Thickness and General Design	: API 623 / ASME B16.34
Pressure Temp. Rating	: ASME B16.34
Face to Face	: ASME B16.10
Flange End	: ASME B16.5
Butt weld End	: ASME B16.25
Material	: ASTM
Inspection & Testing	: API 598 / BS EN 12266 Part 1

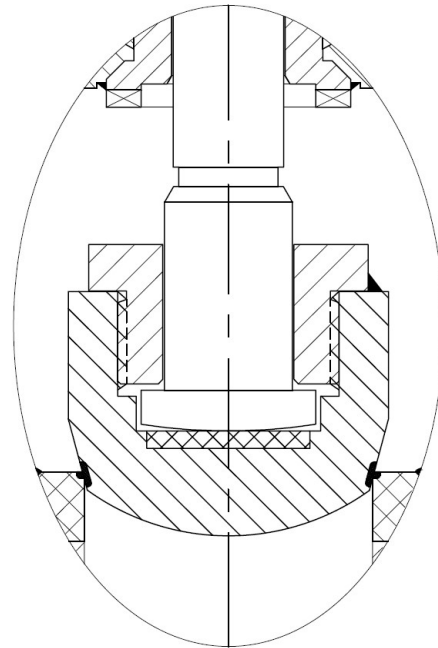
Globe Valve Constructions



SL. NO.	DESCRIPTION	MATERIAL
1	Body	ASTM A 216 Gr. WCB
2	Bonnet	ASTM A 216 Gr. WCB
3	Plug	ASTM A 216 Gr. WCB + 13% Cr. Facing
4	Seat Ring (seal Weld)	ASTM A 105 + H.F
5	Gasket	SPW SS316+Grafoil Filler
6	Spindle	ASTM A 276 TP 410
7	Back Seat	ASTM A 276 TP 410
8	Gland	ASTM A 276 TP 410
9	Gland Flange	ASTM A 105
10	Stud & Nut	ASTM A 193 Gr. B7 / ASTM A 194 Gr. 2H
11	Eye Bolt & Nut	ASTM A 193 Gr. B7 / ASTM A 194 Gr. 2H
12	Gland Packing	Die-formed flexible Graphite rings with braided top and bottom rings
13	Stem Nut	ASTM A 439 Gr. D2
14	Hand Wheel	Malleable Iron
15	Name Plate	SS 304 (Not Shown)



RTJ Joint For 900# & 1500#



Disc, Disc Nut, Thrust Plate & Stem Assembly

- Body and Bonnet Casting are Precision Machined, One Piece Bonnet For Better Alignment and fewer Parts.
- Flanges ASME 150#-600#: Raised Face 125 to 250 AARH.
- Parabolic Disc For Better Meeting the Hard-faced Surface.

Dimension & Weight 150# -1500# Globe Valve

DIMENSION TABLE, CLASS 150#								
SIZE		PORT	L		H-Open Height	WH	APPROX. WT. (kg)	
NPS	DN		FL.	BW			FL	BW
2"	50	51	203	203	295	200	20	-
2.1/2"	65	65	216	-	385	250	32	-
3"	80	76	241	241	385	300	54	-
4"	100	102	292	292	460	350	100	-
6"	150	152	406	406	525	400	160	-
8"	200	203	495	495	974	450	230	-
10"	250	254	622	622	1162	-	325	-
12"	300	305	698	698	1410	-	568	-
14"	350	337	787	787	1545	-	835	-
16"	400	387	914	914	1710	-	-	-
18"	450	438	-	-	-	-	-	-
20"	500	489	-	-	-	-	-	-
24"	600	591	-	-	-	-	-	-

DIMENSION TABLE, CLASS 300#								
SIZE		PORT	L		H-Open Height	WH	APPROX. WT. (kg)	
NPS	DN		FL.	BW			FL	BW
2"	50	51	267	267	310	200	30	-
2.1/2"	65	65	318	318	430	250	57	-
3"	80	76	356	356	430	300	57	-
4"	100	102	444	444	510	450	88	-
6"	150	152	559	559	590	500	163	-
8"	200	203	622	622	670	-	300	-
10"	250	254	711	711	752	-	-	-
12"	300	305	838	838	832	-	-	-
14"	350	337	864	864	1377	-	-	-
16"	400	387	-	-	1522	-	-	-
18"	450	432	-	-	-	-	-	-
20"	500	483	-	-	-	-	-	-
24"	600	584	-	-	-	-	-	-

DIMENSION TABLE, CLASS 600#								
SIZE		PORT	L		H-Open Height	WH	APPROX. WT. (kg)	
NPS	DN		FL.	BW			FL	BW
2	50	51	292	292	340	250	40	-
2.1/2"	65	65	356	356	460	300	72	-
3"	80	76	356	356	460	300	72	-
4"	100	102	432	432	525	450	121	-
6"	150	152	559	559	692	-	250	-
8"	200	200	660	660	750	-	445	-
10"	250	248	787	787	825	-	570	-
12"	300	299	838	838	910	-	910	-
14"	350	327	889	889	1350	-	1115	-
16"	400	375	991	991	1550	-	1480	-
18"	450	419	1092	1092	-	-	-	-
20"	500	464	1194	1194	-	-	-	-
24"	600	559	1397	1397	-	-	-	-

API 623 / BS EN 1873 Cast Steel Globe Valves

DIMENSION TABLE, CLASS 900#								
SIZE		PORT	L		H-Open Height	WH	APPROX. WT. (kg)	
NPS	DN		FL.	BW			FL	BW
2"	50	48	368	368	502	450	67.5	30
2.1/2"	65	57	-	-	-	-	0	0
3"	80	73	381	381	612	350	101	74
4"	100	98	457	457	699	450	158	117
6"	150	146	610	610	939	-	376	290
8"	200	191	737	737	1273	-	719	578
10"	250	238	838	838	1508	-	-	-
12"	300	282	-	-	-	-	-	-

DIMENSION TABLE, CLASS 1500#								
SIZE		PORT	L		H-Open Height	WH	APPROX. WT. (kg)	
NPS	DN		FL.	BW			FL	BW
2"	50	48	368	368	590	305	110	85
2.1/2"	65	57	419	419	720	305	255	195
3"	80	70	470	470	850	356	315	265
4"	100	92	546	546	-	-	-	-
6"	150	136	705	705	-	-	-	-
8"	200	178	832	832	-	-	-	-
10"	250	222	991	991	-	-	-	-
12"	300	263	1130	1130	-	-	-	-

* All Dimension are In mm Unless Specified.

* Special Material & Higher Size/Class Valves also available on request.

L : Face To Face, FL : Flanged End, BW : Butt weld, GO : Gear Operated, RTJ : Ring Type Joint, H : Valve Open Height

Common Test/Inspection Method

Test/Inspection	Method	Acceptance Criteria
Visual Inspection	-	MSS SP55
Chemical Analysis	ASTM E350	Relevant ASTM
Mechanical Properties	ASTM A370	Relevant ASTM
Radiographic Inspection	ASME B16.34	ASME B16.34
Magnetic Particle Inspection	ASTM E709	ASME B16.34
Liquid Penetrant Inspection	ASTM E165	ASME B16.34
Ultrasonic Inspection	ASTM A388	ASME B16.34
Positive Material Identification	Vacuum Emission Spectrometer	Customer Specification
Pressure Testing	API 598 / BS EN 12266 Part 1	API 598 / BS EN 12266 Part 1
Dimensional Inspection		Design Standard